

KERSHAW'S



Oakcroft Road London SE13 £2.35 Million Freehold

Extremely spacious detached Edwardian family home built around 1910 occupying a prime position on a most sought after residential road with excellent transport links to Canary Wharf, The City, West End and Victoria.

The beautifully well planned and proportioned interior has been completely and sympathetically restored with a wealth of original Edwardian features including beautiful fireplaces, panelled doors, plate rails and parquet floor. The windows have recently been replaced with new timber double glazed units. The house features a large entrance hall, two reception rooms, extended kitchen/dining/family room with vaulted ceiling, six bedrooms, three bathrooms, one en suite, laundry room and cloakroom. There is also a beautiful and large landscaped west facing garden with large dining terrace and children's play area. Off road parking.

KERSHAW'S

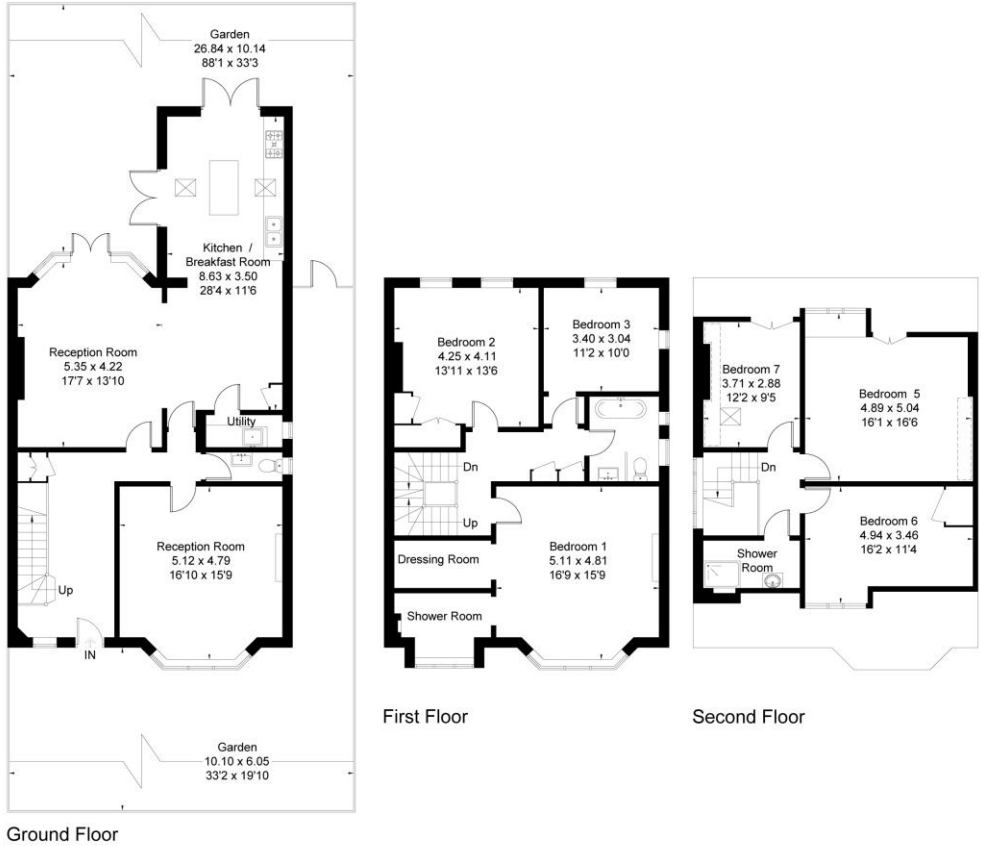


KERSHAW'S



KERSHAW'S

Approximate Floor Area = 247 sq m / 2659 sq ft



Drawn for illustration and identification purposes only by @fourwalls-group.com #71554

