



Morden Road Blackheath £995,000 Share of Freehold

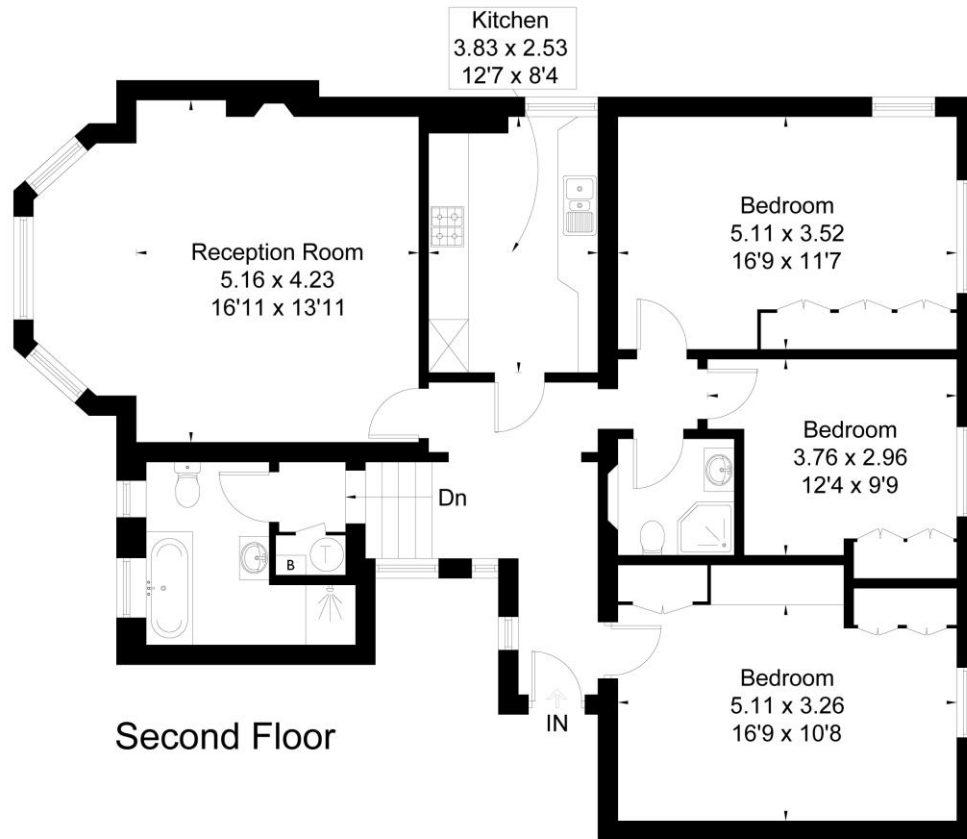
Spacious well planned and proportioned top floor Apartment of some 1236 sq.ft. interior in this superb period Residence located on one of the most sought after wide tree lined roads on the private Cator Estate. Large Living Room and fitted Kitchen Three Double Bedrooms with custom built fitted wardrobes. Family Bathroom and separate Shower Room. Views over the magnificent Communal Garden to the Rear and Residents off road Parking. Share of Freehold and private Store Room.

KERSHAW'S



KERSHAW'S

Approximate Floor Area = 114.8 sq m / 1236 sq ft



This floor plan has been drawn in accordance with RICS Property Measurement 2nd edition.
All measurements, including the floor area, are approximate and for illustrative purposes only. @fourwalls-group.com #70315

Situated in a prime location in this quiet oasis yet just a short walk to the open Heath and Blackheath Village with its array of Shops Restaurants Cafes Bars and Blackheath Railway Station with its excellent service to The City West End and Victoria and a one stop to the DLR to Canary Wharf.

Lease 999 years from 2019
Share of Freehold
Service Charge £160 per month