



Paynell Court Lawn Terrace, Blackheath £1,700 Per Calendar Month

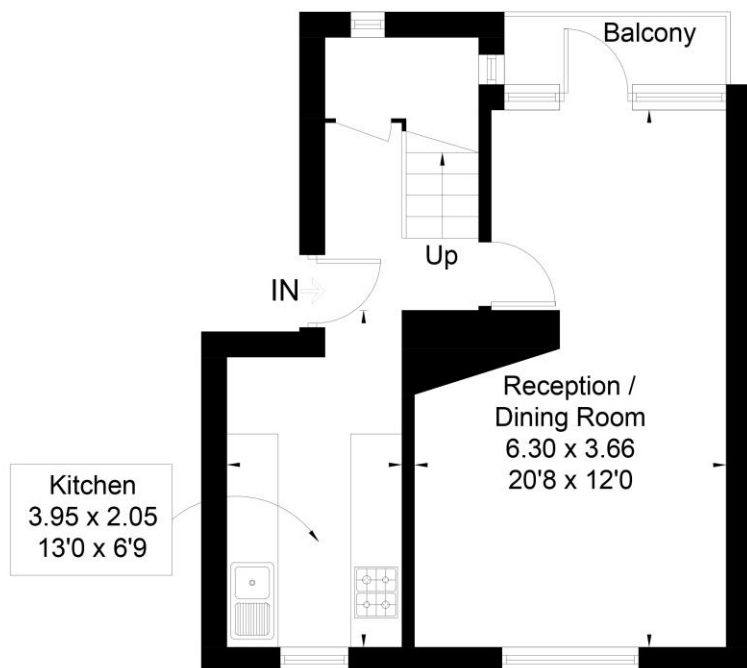
A split level apartment located on the second and third floors of this development situated in a prime Village location just a few minutes walk to Blackheath Railway station and the Village with its array of cafes, shops, restaurants and bars. Ready to move into immediately the newly decorated flat has two double bedrooms, a bathroom, Living Room with a balcony and fitted kitchen. New carpets have just been installed to the stairs landing and bedrooms. Gas central heating and double glazing.

KERSHAW'S

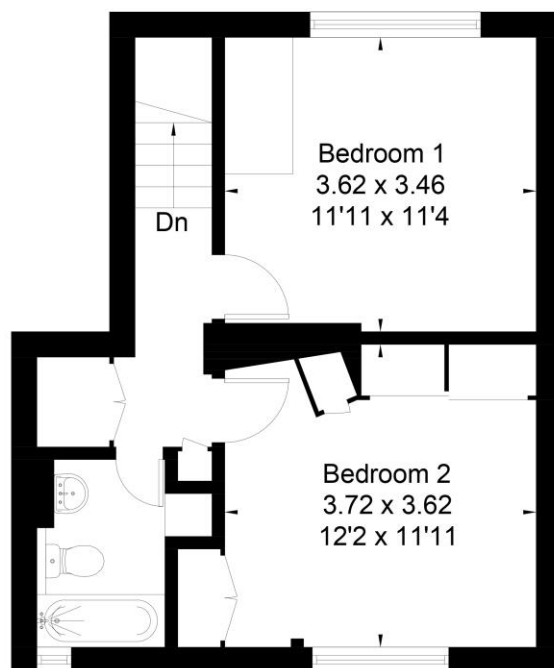


KERSHAW'S

Approximate Floor Area = 72.7 sq m / 782 sq ft



First Floor



Second Floor



This floor plan has been drawn in accordance with RICS Property Measurement 2nd edition. All measurements, including the floor area, are approximate and for illustrative purposes only. @fourwalls-group.com #68897

Energy Efficiency Rating		Current	Potential
Very energy efficient - lower running costs			
(92+)	A		
(81-91)	B		
(69-80)	C		
(55-68)	D	65	72
(39-54)	E		
(21-38)	F		
(1-20)	G		
Not energy efficient - higher running costs			
England & Wales		EU Directive 2002/91/EC	

WWW.EPC4U.COM